



# THORPEDENE SCHOOL WEEKLY NEWSLETTER

ACHIEVING, CARING AND RESPECTING WITH CONFIDENCE

## ISSUE 24 : 22 MARCH 2024

Dear Parents/Carers,

Our Year 2 went on their long anticipated trip to the Discovery Story Centre! On Monday, they explored the world of books through interactive exhibits and imaginative play. We heard reports of thrilling adventures, exciting discoveries, and a renewed love for reading. A big thank you to the teachers who helped make this trip such a learning adventure!

An extra special thank you to Mr. Miles who paid the equivalent of ten children so that the trip could go ahead!



### SUCCESSFUL PARENT CONSULTATIONS

A big thank you to all the Parents and Carers who joined us for parent consultations last week! It was wonderful to see such a fantastic atmosphere whilst discussing your child's progress in detail. We hope the meetings were informative and provided valuable insights into your child's learning journey. I was disappointed that we had a lot of parents who scheduled meetings but didn't attend.

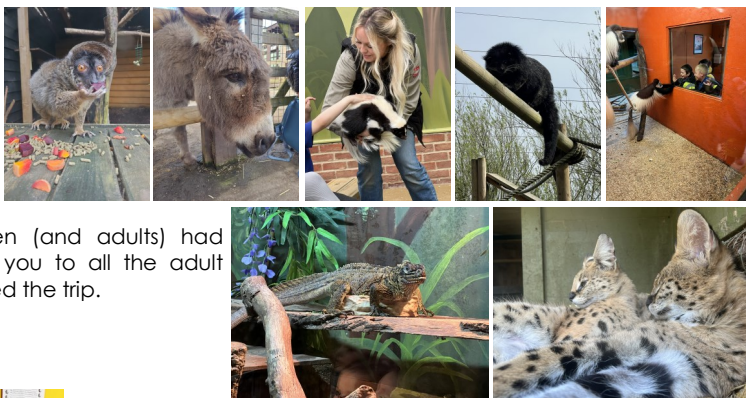
### YEAR 6 MOCK SATS

Year 6 were able to show off their amazing learning! Mock SATs took place this week and the year 6 have been concentrating really hard. These practice tests will help them become familiar with the format and content of the actual SATs this May. These were just practice runs with teachers and staff guiding and offering helpful tips to boost their confidence ready for the real ones.

We hope you have a fantastic weekend!

*Mr. Martinson*

Last week, Year 1 went to see all the animals at Call Of The Wild in South Woodham Ferrers. They learned about habitats, animal adaptations and lots of other cool things! There were even some animals that the children (and adults) had never heard of! Thank you to all the adult helpers who accompanied the trip.



In 2S, it has been lovely to see the confidence in the children who are so proud of the work they have been doing recently! Well done to all!

### LET'S CELEBRATE!



#### THORPEDENE STARS THIS WEEK

PHEOBE	5H
TYLER S	6F
REEGAN	6F
ROWAN	6N



#### TTRS BIGGEST INCREASE IN CORRECT ANSWERS

YR1	NOAH
YR2	AVA-MAI
YR3	JACK
YR4	POPPY
YR5	RACHEAL
YR6	GRAYSON



#### STAR READERS

PUFFINS	FRANK
SWANS	MAYA
1N	ALFIE
1W	MARCIE
2A	RUBY
2D	KIT
2S	SHAKIL
3C	BLAISE
3G	MAISIE
3S	ARIA
4B	HAKAR
4K	ELIJAH
4M	PEARL
5H	ROMMIEE
5M	AWEL
5S	ASMIN
6F	RALPH
6N	ILA
6S	AAKAVY

### GET SOCIAL!

CLICK ON ICONS TO ACCESS  
OUR INSTAGRAM/TWITTER!



Southend East Community Academy Trust

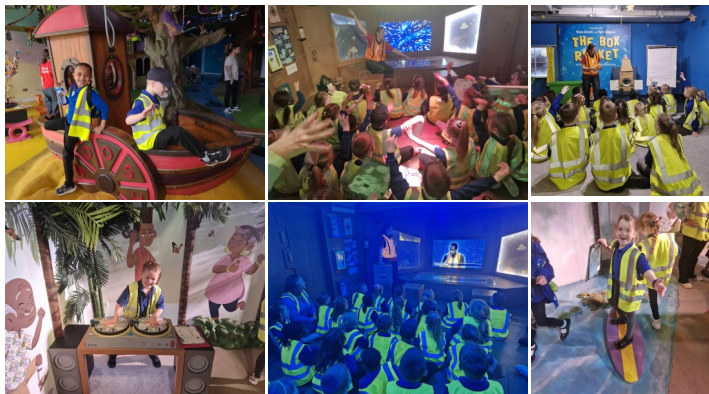




ACHIEVING, CARING AND RESPECTING  
WITH CONFIDENCE

## WHAT ELSE IS GOING ON?

On Monday, Year 2 visited the Discovery Story Centre in Stratford, London. The children had a great time going on a space mission to 'Planet Nan', where they had to feed words to re-awaken the 'Story Stone' and bring the planet back to life. There was lots of adventurous play in the gardens too and all adults and children enjoyed the day! A big thank you to all the adult helpers who made this trip possible!



During Year 5 and 6's final session, they planted some potatoes and started preparing our very own vegetable patch! Watch this space to see what we grow!



### SIGN OF THE WEEK

To celebrate Sign Language Week, here is the alphabet for you to try to learn at home!



This year we raised

**£198.03**

For Comic Relief. Thank you to all who donated to this worthy cause!



### DATES FOR YOUR DIARY

DATE	EVENT
25TH MAR	EYFS/KS1/KS2 PARENT CONSULTATIONS - 3.30PM - 5.30PM
27TH MAR	4K CLASS ASSEMBLY - STARBOARD HALL - 9.05AM
28TH MAR	LAST DAY OF SPRING TERM FOR ALL CHILDREN
15TH APR	ALL CHILDREN RETURN TO SCHOOL - SUMMER TERM BEGINS
17TH APR	3S CLASS ASSEMBLY - STARBOARD HALL - 9.05AM



[Full Calendar Here](#)

### THOUGHT FOR THE WEEK

*'Now' matters more than any other time in your life!*



### ATTENDANCE

#### MATTERS AT THORPEDENE!

# HERO

HERE EVERYDAY READY ON TIME

Thorpedene's and the national attendance target is 96%.

Sadly, no classes met the target for last week.

Class	%
6F	95%
3C	95%
3S	95%
2A	95%
2S	95%
3G	94%
5H	94%
1W	94%
2D	93%
4M	93%
4B	93%
6N	91%
5M	91%
4K	91%
5S	90%
Swans	90%
6S	89%
1N	85%
Puffins	77%
<b>Total</b>	<b>92.1%</b>

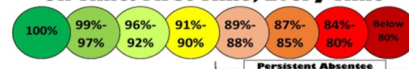
#### REMEMBER:

All children should attend school every day, be a H.E.R.O



#### Attendance Matters

On Time: First Time, Every Time



Which Zone are you in?

### CONTACT US



01702 582225

[office@thorpedene.secat.co.uk](mailto:office@thorpedene.secat.co.uk)



Southend East Community Academy Trust

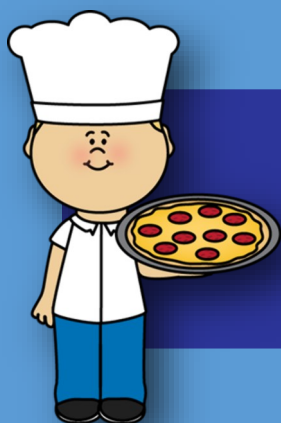




# THORPEDENE SCHOOL WEEKLY NEWSLETTER

ACHIEVING, CARING AND RESPECTING WITH CONFIDENCE

## COMMUNITY NOTICEBOARD



We are delighted to be able to offer a Parents' cooking session, run by Everyone Health on Wednesday 24th April between 3.30pm and 5.00pm. The recipe will be Pitta Pizzas and this is a budget friendly, family recipe. We invite you and your child to come along and cook together and enjoy what you create! Spaces are limited and will be offered on a first come first served basis. To reserve your space, please email Miss Le Grys on -

[community@thorpedene.secat.co.uk](mailto:community@thorpedene.secat.co.uk)

WEDNESDAY 27TH MARCH 2PM-4PM

JOIN US  
FOR THE THORPEDENE  
COMMUNITY FAIR

Logos displayed on the poster include: Public Health England, ASDA COMMUNITY, Southend Carers, HOME START Essex, citizens advice, ATF, SECH (South Essex Community Hub), JUST RIDE SOUTHEND, Southend United, wellbeing @ garonpark, yoga4all, Southend adult community college, everyonehealth, TrustLinks, SAVS (Southend Association of Voluntary Services), and Little Heroes ASD Support.

**SHOWCASING SUPPORT TO ALL SOUTHEND FAMILIES**

HOUSING / HELP WITH BILLS / HEALTH & WELLBEING  
EXTRA-CURRICULAR OPPORTUNITIES / SEND SUPPORT  
SUPPORT FOR CARERS AND MUCH, MUCH MORE!

**STARBOARD PLAYGROUND/HALL**



Southend East Community Academy Trust